

Rapiscan 500 CBT

Rapiscan[®] systems

An OSI Systems Company

BAGGAGE AND PARCEL INSPECTION

Rapiscan 500 Series Computer Based Training An effective solution for training all levels

The Rapiscan 500 Computer Based Training (CBT) program is PC based software used for effectively training personnel on the operation of the Rapiscan 500 series baggage and parcel X-ray screening systems. This interactive, self-paced program contains a tutorial course and an X-ray system simulator. The representation of real-world threats is used to assist the operator in understanding the importance of careful examination of every bag and parcel. Both programs use our Adaptive Difficulty Engine (ADE) to assess an operator's proficiency in core skill areas and then tailor exams to match aptitude levels.

Features

- Real-world threat scenarios
- Self-paced courses
- Evaluates and adapts to challenge operator's skill level

Benefits

- One license per PC, multiple users
- Single database on a network server
- Cost effective
- Can be employed anytime, anyplace

Tutorial Course

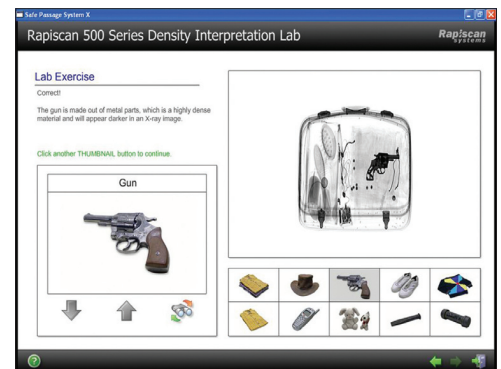
The tutorial course readies operators to correctly operate the basic features of the Rapiscan 500 series X-ray systems.

- Summary at the end of each tutorial and completed course
- Practice sessions within tutorial
- Glossary of definitions on each page
- Icon to identify specific objects being analyzed
- Ability to send messages to instructor at any stage during the course

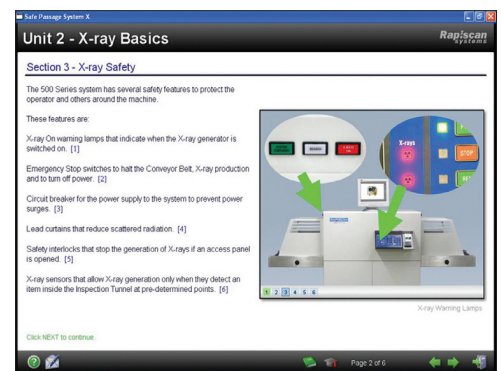
Simulation Course

The simulation course is an interactive training program that provides an opportunity for operators to apply their X-ray interpretation skills by means of an on-screen simulation of the system.

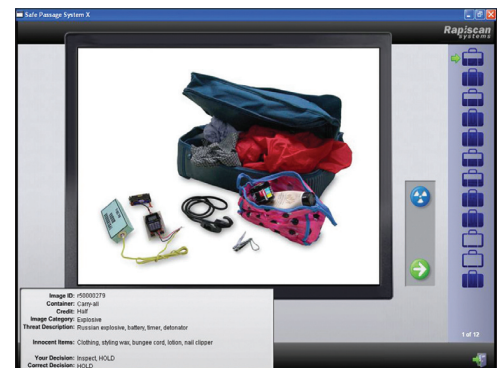
- X-ray interpretation practice
- 3 levels of increasing difficulty
- Review session
- X-ray interpretation final exam



Lab Exercise



X-ray System Operation Training



Exam Review



Exam Review



ONE COMPANY - TOTAL SECURITY

BAGGAGE AND PARCEL INSPECTION

Tutorial Course Topics

- 1. X-ray Basics** – Full instruction of basic X-ray principles and safety precautions to be observed while operating the system.
- 2. System Operation** – Complete training on the core components and indicator lights that comprise the system.
- 3. Image Controls** – Broad instructions on image processing and zoom control features for X-ray image interpretation to aid operator with x-ray image interpretation.
- 4. Advanced Features** – Comprehensive guidelines and instructions on advanced image processing, zoom features, image archiving and Threat Image Projection (TIP) image response.

Simulation Course Usage

- 1. X-ray Interpretation Training** – The extensive X-ray image library contains both fictional threat and benign items that appear randomly. The fictional threat items include guns, knives, explosives, sharp objects, and Improvised Explosive Devices (IED). Operators develop proficiency by advancing through three levels of difficulty based on bag complexity and orientation of the threat.
- 2. Adaptive Training** - As operators work through practice sessions, a sophisticated algorithm monitors and tracks executed actions and decisions for each image. Upon completion of a practice session, the algorithm determines whether the operator correctly responded to the exposed X-ray images. Based on that performance, subsequent practice sessions are tailored to meet the specific training needs of the operator.
- 3. Ongoing X-ray Interpretation Practice** – The extensive X-ray image library and adaptive algorithm helps operators develop knowledge of a wide variety of look-a-like threats under X-ray. Trainers can tailor sessions to focus on specific threats of concern for their organization to continuously ensure the detection skills of operators.

The Rapiscan 500 CBT provides a limited set of threat objects AND CONCEALMENT TECHNIQUES, INTENDED TO ASSIST OPERATORS in learning how to operate the system, but not FOR BECOMING FULLY proficient IN THREAT OBJECT OR CONCEALMENT TECHNIQUE DETECTION.

SAFETY Act Certified



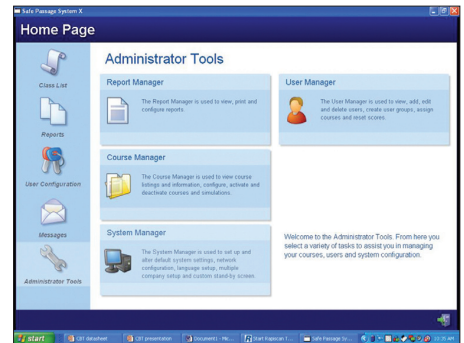
All of the information contained in this data sheet is subject to the disclaimers, limitations of liability and other terms contained in the Software License Agreement associated with this Product. Please carefully read the Software License Agreement before using the product.

ISO 9001:2000 Certified

With continual development of our products Rapiscan Systems reserves the right to amend specifications without notice.



Simulator Screen



Administrative Screen

Courseware Specifications

Minimum Requirements

1.6 GHz processor
1 GB RAM
17" monitor with 1024x768 resolution
Keyboard
Mouse
16x CD-Drive
Windows XP Professional SP2

Available Programs

Mailroom Applications	Checkpoint Applications
Tutorial Course only	Tutorial Course only
Tutorial Course & Simulator	Tutorial Course & Simulator

Languages

English

9150119-3

www.rapiscansystems.com • sales@rapiscansystems.com

AMERICAS, CANADA, CARIBBEAN
2805 Columbia Street
Torrance, California 90503
UNITED STATES OF AMERICA
Tel: +1 310-978-1457
Fax: +1 310-349-2491
E-MAIL
sales@rapiscansystems.com

EUROPE, AFRICA, MID EAST
X-Ray House
Bonehurst Road
Salfords
Surrey RH1 5GG
UNITED KINGDOM
Tel: +44 (0) 870-7774301
Fax: +44 (0) 870-7774302

ASIA
240 Macpherson Road
#06-04 Pines Industrial Building
Singapore 348574
SINGAPORE
Tel: +65-6743-9913
+65-6743-9892
Fax: +65-6743-9915

AUSTRALIA
Rapiscan House
4 Ross Street
South Melbourne Victoria
Australia 3205
AUSTRALIA
Tel: +61 3 9929 4600
Fax: +61 3 9929 4655

distributor stamp