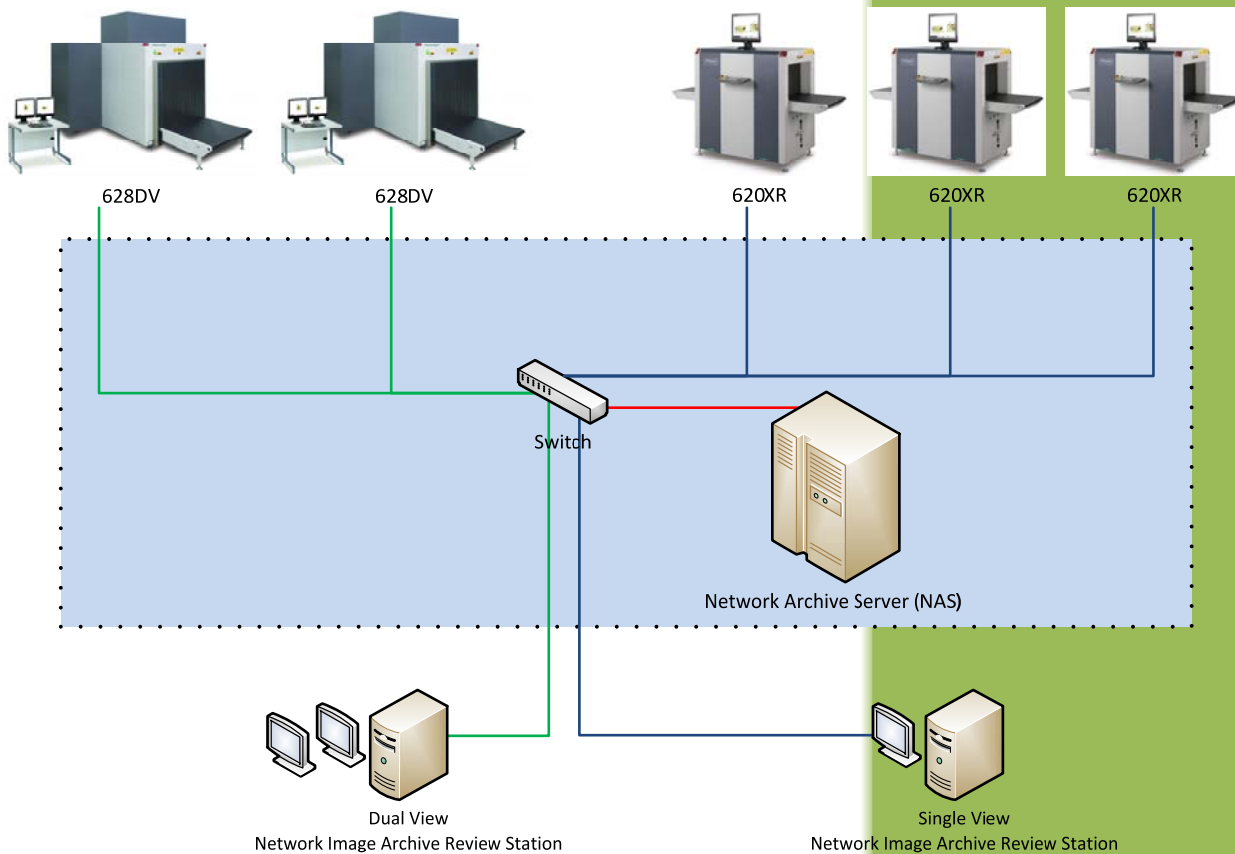


# Rapiscan<sup>®</sup> systems

An OSI Systems Company

## Network Image Archive Review NETView<sup>™</sup>



# Network Image Archive Review (NETView™)

**Rapiscan Systems' state-of-the-art Network Image Archive Review (NETView™) solution provides a unified management platform for storing, retrieving, and reviewing the X-ray images from multiple scanners in a centralized location**

## Table of Contents

<b>Overview .....</b>	<b>3</b>
<b>Key Features and Benefits.....</b>	<b>4</b>
<b>Operational Overview.....</b>	<b>5</b>
<b>NETView™ Operational Configurations .....</b>	<b>8</b>
<b>NETView™ System Hardware Requirements .....</b>	<b>11</b>
<b>NETView™ Hardware Components .....</b>	<b>12</b>
<b>Options - TIPNet™ .....</b>	<b>14</b>

With continual development of our products Rapiscan Systems reserves the right to amend specifications without notice. Product pictures are for general reference. Please note that due to US laws and regulations, not all Rapiscan products are available for sale in all countries without restriction. Please contact your Rapiscan Systems sales representative for more information.

## Overview

---

Designed to integrate multiple Rapiscan baggage and parcel inspection screening (BPI) systems, Network image archive review (NETView™) allows the X-ray images generated by the many networked scanners, to be archived in a single Network Archive Storage (NAS) server. Allowing for the collective archiving of images from a variety of Rapiscan BPI systems, including single and dual view scanners with various tunnel sizes, NETView™ allows image retrieval, review, processing, manipulation as well as image printing and export from a single operator NETView™ workstation (NWS).

The NETView™ Workstation includes the same familiar and matching tools, software and user interface as Rapiscan's standard tools available on a standalone scanner for image processing, manipulation and review, ensuring consistency and no need for additional knowledge acquisition by users.

The NETView™ is recommended for high throughput security applications where remote access to archived images on many scanners from single workstation is desired. Examples of such are aviation checkpoint screening, aviation air cargo screening, customs and border control and similar other market segments.

## Key Features and Benefits

---

### FEATURES

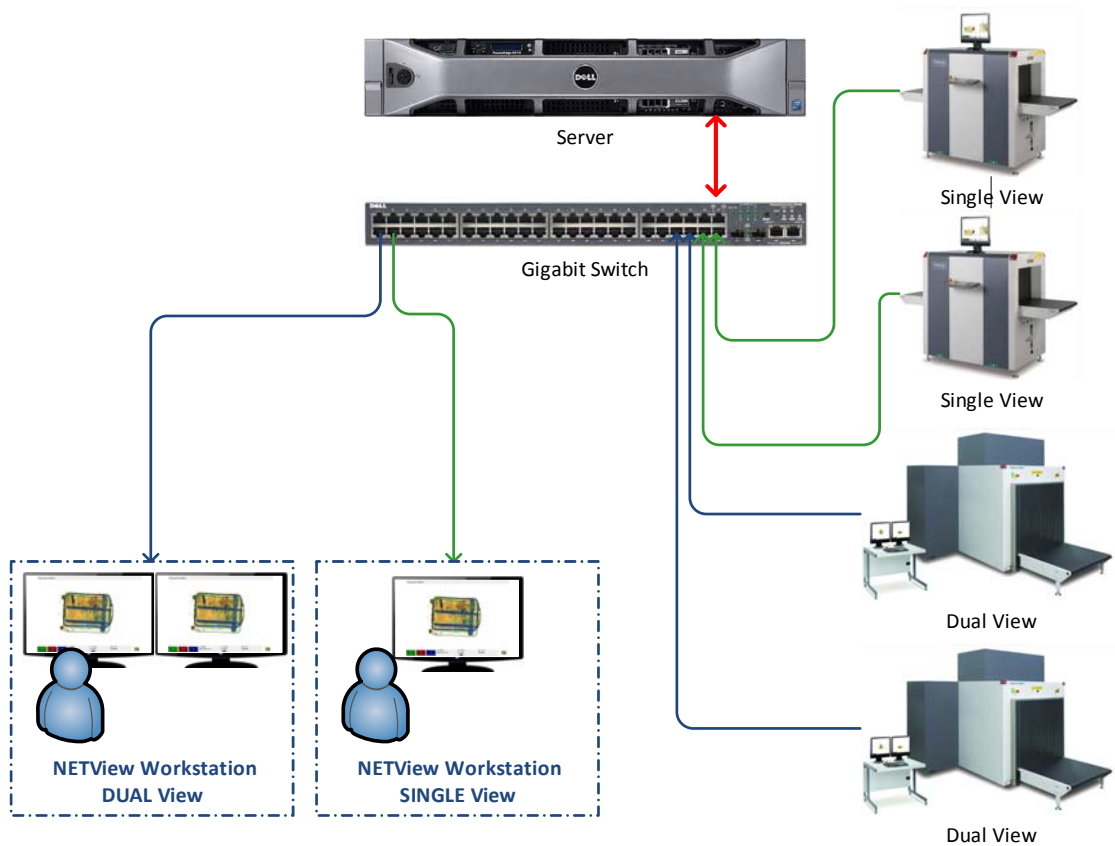
- Configurable time image retention based on first in first out rule to ensure storage availability at all times
- Configurable and scalable storage media size depending on archive frequency, retention period and number of networked scanners
- Identical Graphical User Interface (GUI) and Operator Control Panel (OCP) allows image processing, printing and export from the NETView™ workstation seamless
- Immediate image synchronization with the scanners upon inadvertent NAS shutdown or network interruption

### BENEFITS

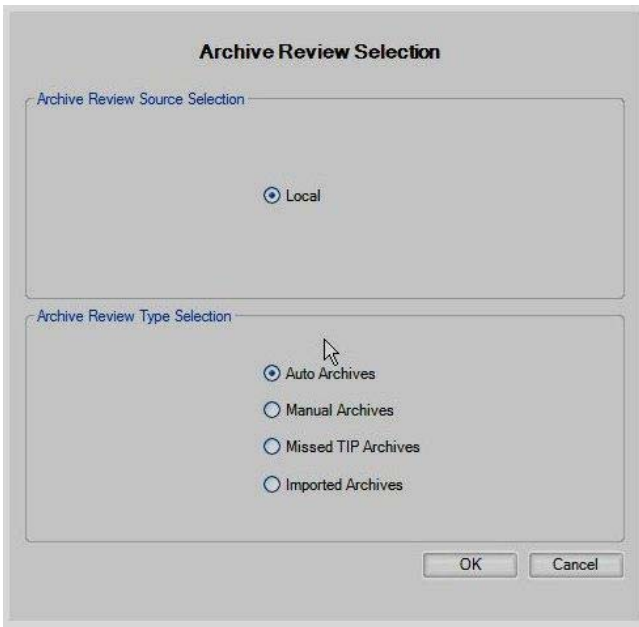
- Reduces complexity in shared infrastructure through a single, unified storage management approach
- Provides supervisory oversight in a complex screening site
- Facilitates an easy search and image retrieval through centralization of images from all the scanners in one site
- Allows for an historical screening perspective through long term preservation and retention of images

## Operational Overview

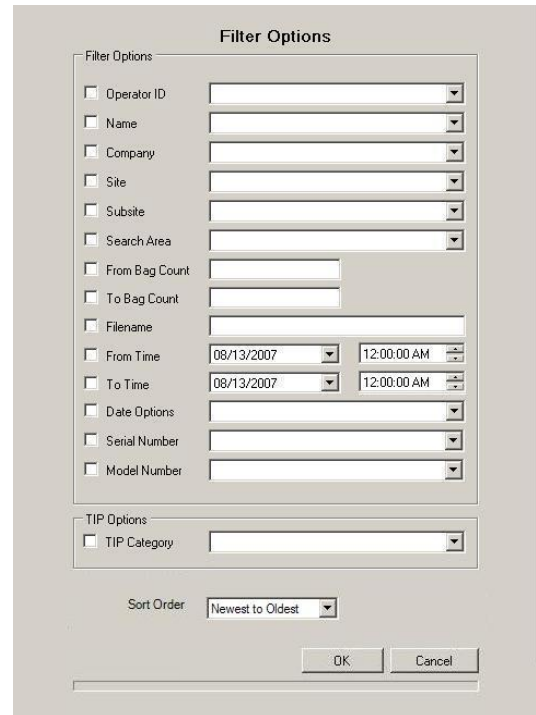
With NETView™, all locally archived images are copied onto the NAS server from all scanners connected to the same network in real time. The NETView™ configuration then allows an authorized user at the NETView™ workstation (NWS) to retrieve and centrally review three types of Manually Archived Images, Automatically Archived Images and Missed Archived Threat Image Projection (TIP) images based on scanner configuration.



Upon successful login to Rapiscan BPI OS600 software at the NETView™ workstation, after selecting the type of archive (manual, automatic, missed TIP); a dialog filter window is presented. It allows the user to select the desired archived images for viewing, based on a variety of criteria, such as operator ID, site, date, specific scanner model or serial number.



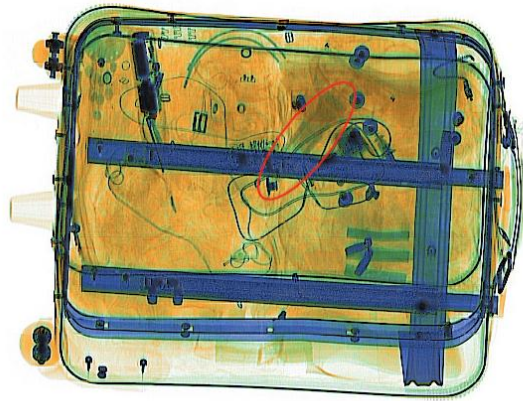
**Figure 1. Archive Selection Window**



**Figure 2. Image Retrieval Selection Filter Window**

The windows based OS600 operating system utilizes the identical graphical user interface used on the scanner. It features the same image enhancement tools and capabilities allowing the operator to enhance an image while it is scrolling across the screen. The OS600 is also capable of exporting images to an external USB flash or hard drive as well as printing any of the images with the optional printer kit.

Technician Scan Mode

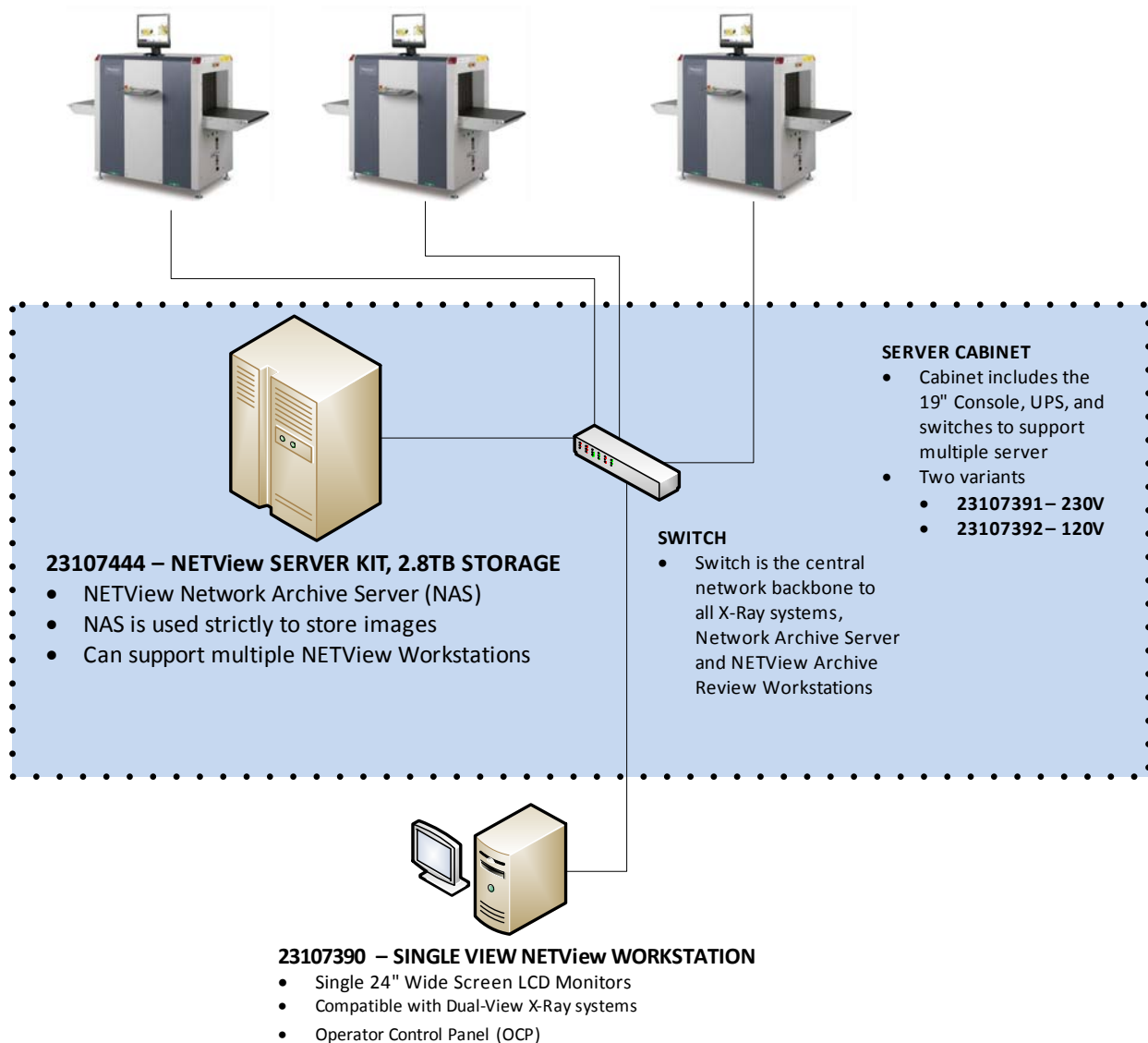


CC	CC+M	BW	11/26/07 Bag count: 331	11:12:56 1x Zoom ◀ ▶	ID: 1111 NORMAL	
----	------	----	----------------------------	----------------------------	--------------------	--

## NETView™ Operational Configurations

### Single View Scanners Configuration

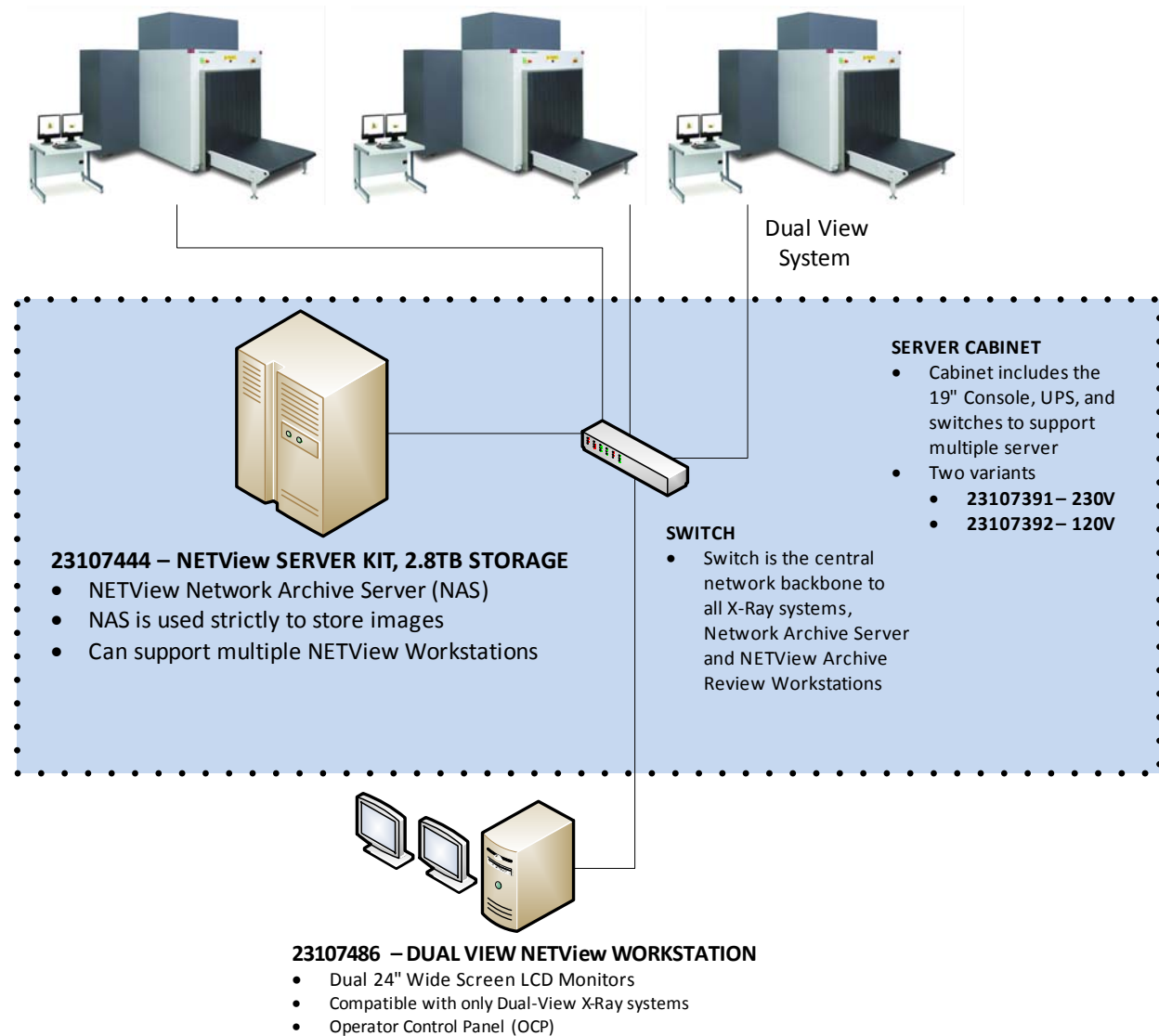
In this configuration up to fifty (50) *Single View* X-ray scanners of any of Rapiscan 600 series with various tunnel sizes can be connected to the server via a switch and the images can be retrieved and viewed on one or more NETView™ *Single View* workstation.





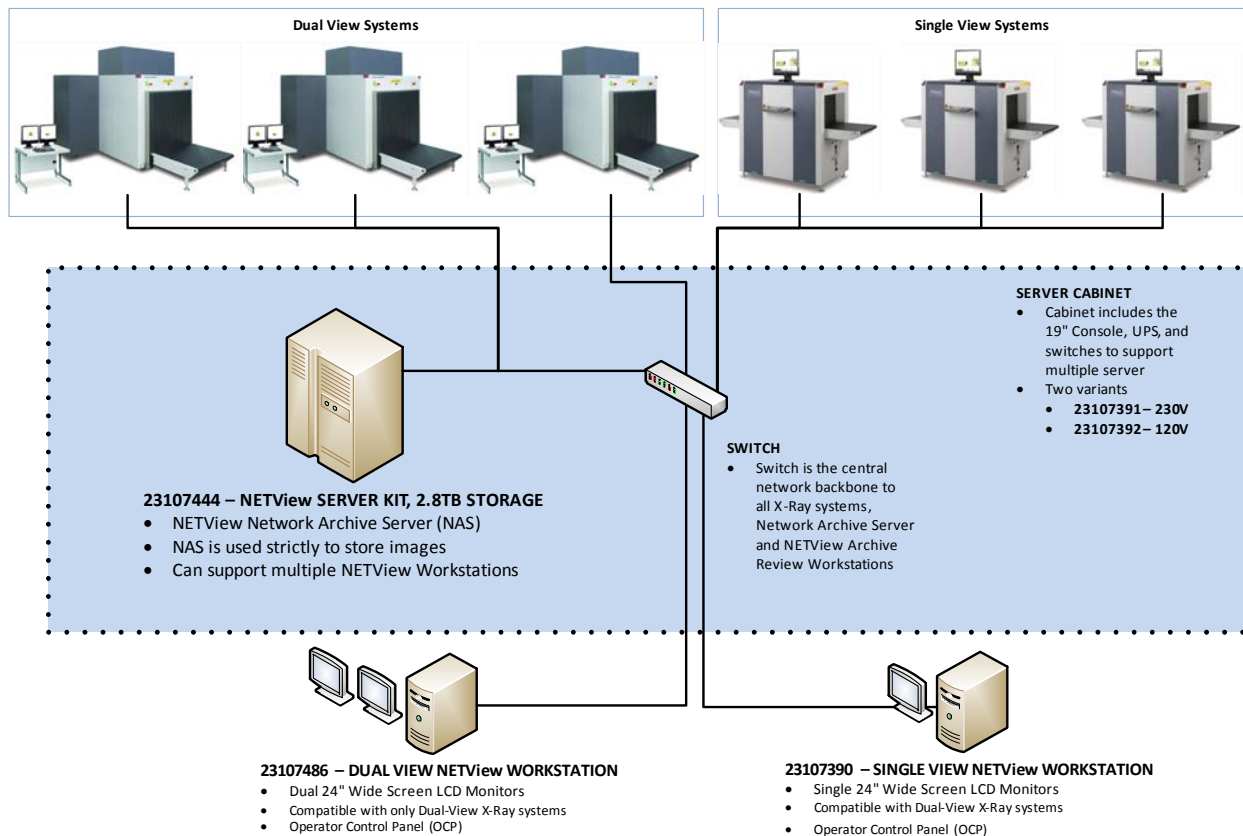
Dual View Scanners Configuration

Similar to single view configuration, NETView™ can also support up to fifty (50) dual view Rapiscan 600 series X-ray scanners with various tunnel sizes for image archiving and retrieval and viewing on one or more NETView™ *Dual View* workstation.



Combined Dual and Single View Scanner Configuration

The third type of NETView™ configuration can support a combination of up to fifty (50) single view and dual view scanners with various tunnel sizes. In this configuration, the images from single view scanners can be retrieved and viewed on one or more NETView™ *Single View* workstation and the images from dual view scanners can be retrieved and viewed on one or more NETView™ *Dual View* workstation.



In all three configurations the network server and the network switch(es) remain the same but the type of NETView™ workstations is based on viewing images from single view scanner and/or dual view scanner. In all three configurations the scanners can be of any Rapiscan 600 series tunnel sizes.

## NETView™ System Hardware Requirements

All SINGLE View Scanner Configuration			
Item	Part number	Quantity	
<b>Server</b>	<b>23107444</b>	1	
<b>Server Cabinet, Console and UPS (230V)</b>	<b>23107391</b>	1	
<b>Server Cabinet, Console and UPS (120V)</b>	<b>23107392</b>	1	
<b>24-Port Gigabit Network Switch</b>	<b>1310754</b>	*	
<b>NETView™ Workstation (Single View)</b>	<b>23107390</b>	**	
<i>PC with OS600 Software</i>		1	
<i>Scanner Operator Control Panel</i>		1	
<i>24" Widescreen LCD monitor</i>		1	

All DUAL View Scanner Configuration			
Item	Part number	Quantity	
<b>Server</b>	<b>23107444</b>	1	
<b>Server Cabinet, Console and UPS (230V)</b>	<b>23107391</b>	1	
<b>Server Cabinet, Console and UPS (120V)</b>	<b>23107392</b>	1	
<b>24-Port Gigabit Network Switch</b>	<b>1310754</b>	*	
<b>NETView™ Workstation (Dual View)</b>	<b>23107486</b>	**	
<i>PC with OS600 Software</i>		1	
<i>Scanner Operator Control Panel</i>		1	
<i>24" Widescreen LCD monitor</i>		2	

DUAL View and SINGLE View Combination Scanner Configuration			
Item	Part number	Quantity	
<b>Server</b>	<b>23107444</b>	1	
<b>Server Cabinet, Console and UPS (230V)</b>	<b>23107391</b>	1	
<b>Server Cabinet, Console and UPS (120V)</b>	<b>23107392</b>	1	
<b>24-Port Gigabit Network Switch</b>	<b>1310754</b>	*	
<b>NETView™ Workstation (Single View)</b>	<b>23107390</b>	**	
<b>NETView™ Workstation (Dual View)</b>	<b>23107486</b>	**	

\* The number of switches depends on total number of scanners and workstations connected to the server.

\*\* The number of workstations depends on customer throughput and other customer requirements

## NETView™ Hardware Components

---

### Network Server



The NETView™ Network Archive Storage (NAS) server is a physical computer with all the required software that manages the flow of data between all scanners and NETView™ Workstations.

The server includes optional redundant hard-drives and it can support up to fifty (50) Rapiscan Baggage and Parcel Inspection X-Ray Scanners and multiple NETView™ Workstations depending on throughput and requirements.

### Network Switch(es)



The network switches provide the backbone connectivity between networked scanners, NETView™ Workstations and NETView™ server.

### Network Server, Switch, Console, UPS Cabinet



A standard rack-mount cabinet houses all server computers and switches, in addition to an Uninterrupted Power Supply (UPS) with a power distribution bar.

The cabinet is available for a 230V or 120V power supply. The server console is the rack mounted monitor and keyboard for Network Server Administrators, and includes a KVM (keyboard, video, mouse) switch to provide access to all servers within a specific Network installation.

## **NETView™ Workstation**



The NETView™ Workstation is a physical computer that operates the Rapiscan proprietary BPI OS600 baseline software that mirrors the same operating system used on the local scanner.

The workstation also includes a standard scanner Operator Control Panel (OCP) and one or two 24" wide screen LCD monitors for viewing images from single view or dual view systems respectively.

For additional information and how to configure a solution for your specific requirements, please contact your Rapiscan Systems local sales representative.

## Options - TIPNet™

NETView™ can also be operated with an optional TIPNet™ on the same network. The implementation and use of Rapiscan TIPNet™ allows supervisors or managers to run TIP on multiple X-ray systems from one central network computer. TIPNet™ saves time by eliminating the need to configure each individual X-ray machine. By having a central point for reviewing TIP data and managing TIP settings, a customer can reduce costs while improving efficiency. Rapiscan's proprietary TIP Management Analysis Software (TMAS) which is the core of the TIPNet™ functionality manages the TIP environment with friendly user controls and in-depth analysis of screeners' TIP data. TMAS is a complete TIP data management tool providing a simple, robust and functional reporting interface. For complete information on TIP and TIPNet™ please consult your local distributor or sales representative.



## THE WORLD'S LEADER FOR EFFICIENT, EFFECTIVE SECURITY

With over 75,000 systems deployed in over 100 countries, Rapiscan Systems is the global security solutions provider of choice to governments and companies worldwide. Rapiscan baggage and parcel inspection systems have received multiple approvals, certifications from numerous government agencies including the U.S. Transportation Security Administration (TSA), the UK Department for Transport (DfT) and the European Civil Aviation Conference (ECAC). All Rapiscan products are backed by a worldwide training, maintenance and service organization which is available to customers 24/7. An ISO 9001:2008 certified company; Rapiscan Systems submits its products to rigorous certification and testing bodies, including:

### SAFETY ACT

Rapiscan Systems products have been certified by the U.S. Department of Homeland Security for Support Anti-Terrorism by Fostering Effective Technologies (SAFETY) Act of 2002, which provides important benefits to organizations that deploy security technology. For additional information visit [www.safetyact.gov](http://www.safetyact.gov).

For additional information on other Advanced Technology Options (ATO), please consult your local distributor or sales representative.

- Threat Image Projection (TIP)
- TIPNet™
- Target™ (Operator Assist Automatic Detection of Bulk Explosives)
- aLEXis™ (Operator Assist Automatic Detection of LAGs Explosives and precursors)
- NARCScan™ (Operator Assist Automatic Detection of Controlled Narcotics)
- Density Threat Alert (DTA)
- Operator Training Program (OTP)
- Multi-System Network Display Station (NDS)
- NETView™ (Network Image Archive Review)
- NEXLink™ (Matrixing, Networking and Multiplexing)



### EMAIL

sales@rapiscansystems.com

### WEB

www.rapiscansystems.com

### AMERICAS, CARIBBEAN

2805 Columbia Street  
Torrance, California 90503  
UNITED STATES of AMERICA  
Tel: +1 310-978-1457  
Fax: +1 310-349-2491

### EUROPE, MIDDLE EAST, AFRICA

X-Ray House  
Bonehurst Road  
Salfords  
Surrey RH1 5GG  
UNITED KINGDOM  
Tel: +44 (0) 870-7774301  
Fax: +44 (0) 870-7774302

### ASIA PACIFIC

240 Macpherson Road  
#07-01 Pines Industrial Building  
Singapore 348574  
SINGAPORE  
Tel: +65-6846-3511  
Fax: +65-6743-9915