

HAND-HELD METAL DETECTOR WITH 3 SENSITIVITY SETTINGS TO DETECT ALL TYPES OF METAL.

- UNIQUE ANGLED DESIGN
- RUGGED CONSTRUCTION
- DETECTS ALL METALS
- LIGHTWEIGHT

MARKETS

- Aviation
- Critical Infrastructure
- Loss prevention
- Event security
- Law enforcement
- Corrections
- Commercial



HAND-HELD METAL DETECTORS ARE AN INTEGRAL PART OF THE PHYSICAL SECURITY SCREENING PROCESS. WITH THE METOR 28, WE HAVE DESIGNED A UNIT THAT BENEFITS SECURITY PERSONNEL AS WELL AS THE PERSON BEING SCANNED. OUR UNIQUE ANGLED DESIGN ALLOWS YOU TO THOROUGHLY SCAN AN INDIVIDUAL, WHILE KEEPING YOUR HAND AWAY FROM THEIR BODY.

ADDITIONAL BENEFITS

- The circular opening assists in pinpointing metal objects
- Comfortable handle for easy control and grip
- Lightweight 260 g (9.3 oz.) with battery
- Wrist strap

DETECTION

Detects all metals, both ferrous and non-ferrous.

SENSITIVITY

A Three (3) sensitivity settings

Detection performance:

Level 1: small handguns and knives

Level 2: razor blades, handcuff keys

Level 3: .22 caliber bullet, metal shanks

OPERATION

3-way push-button operation:

On/Off/Momentary

BATTERY

NiMH rechargeable battery or 9V alkaline battery.
Low battery indicator, both visual and audible.

ALARM

Audible and visual alarm indication.

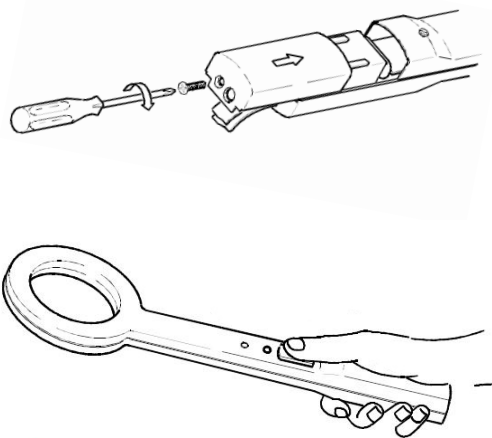
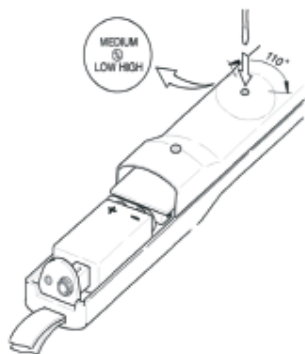
RUGGED CONSTRUCTION

High impact resistant ABS case.

SAFETY

The Metor 28 is safe for people with pacemakers and will not affect magnetic recording media. The magnetic field strength of the Metor 28 meets with the limits set by international standards for human safety.

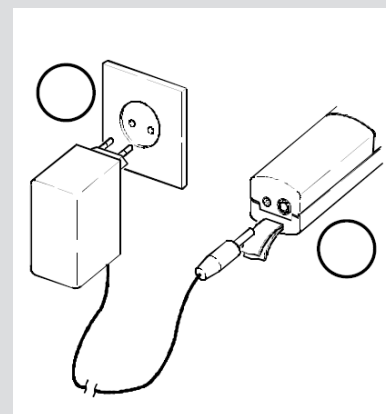
METOR 28



Rapiscan[®]
systems
An OSI Systems Company

OPTIONS AND ACCESSORIES

- Charging Unit: Simple charging connection that plugs directly into the unit.



CONFORMITY

CE Compliant

Conforms with the applicable EU directives.

SPECIFICATIONS

Ambient Operating Temperature	0°C to 50°C (32°F to 122°F)
Power Supply	Standard 9V battery or rechargeable NiMH battery.
Battery Life	Alkaline battery: up to 220h, typical 110h (550mAh battery capacity)* Rechargeable NiMH battery: up to 80h, typical 40h (200mAh battery capacity)* Recharge time for NiMH battery (200mAh) 14h * Up to lifetime based on standby current (no alarm), typical based on 10% alarm / 90% standby as per NIJ Standard-0602.03 (draft 2011)
Dimensions (Body)	410 x 140mm (16.35 x 5.5 in).
Dimensions (Grip)	33 x 33mm (1.3 x 1.3 in).
Weight	260 g (9.3 oz.) with battery.

AMERICAS, CARIBBEAN

2805 Columbia Street
Torrance,
California
90503
UNITED STATES of AMERICA

Tel: +1 310-978-1457
Fax: +1 310-349-2491

EUROPE, MIDDLE EAST, AFRICA

X-Ray House
Bonehurst Road
Salfords
Surrey RH1 5GG
UNITED KINGDOM

Tel: +44 (0) 870-7774301
Fax: +44 (0) 870-7774302

ASIA

240 Macpherson Road
#07-01 Pines Industrial Building
Singapore
348574
SINGAPORE

Tel: +65-6846-3511
Fax: +65-6743-9915

With continual development of our products Rapiscan Systems reserves the right to amend specifications without notice. Product pictures are for general reference. Please note that due to US laws and regulations, not all Rapiscan products are available for sale in all countries without restriction. Please contact your Rapiscan Systems sales representative for more information.



Rapiscan Systems is ISO 9001:2008 Certified

sales@rapiscansystems.com
www.rapiscansystems.com