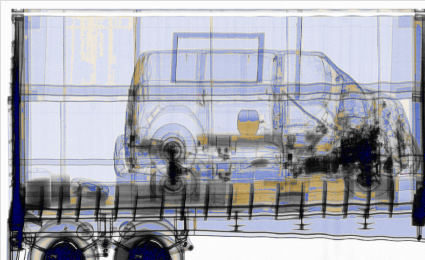
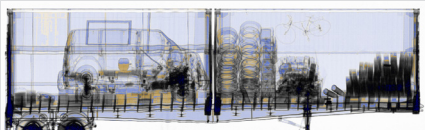


RAPISCAN EAGLE M25

MOBILE CARGO AND VEHICLE SCREENING SYSTEM

KEY FEATURES AND BENEFITS

- High-quality imaging with material discrimination
- Multiple scan modes for maximum flexibility
- Small exclusion zone for deployment in space-constrained areas
- Integrated cab design for operator comfort and efficiency



TOP: Full scan transmission X-ray
BOTTOM: Enlarged section

The Rapiscan Eagle® M25 offers high-quality detection capabilities in a compact, robust, mobile configuration designed for Customs clearance at ports and borders, and security checkpoint applications.

The Rapiscan Eagle M25 can scan stationary cargo or vehicles driven through the X-ray tunnel with automatic cab exclusion or CabScan® mode to image the entire vehicle. The system offers best-in-class, three-color material discrimination for improved detection of threats and contraband. The system itself, along with the associated radiation controlled zone, is smaller than typical high-energy mobile systems, allowing operators to set up scanning areas at congested seaports and land border crossings. The M25 also features an integrated cab design allowing the driver and operators to be co-located in the same spacious cabin for improved comfort and ease of communications. The system is easily driven over public roads and quickly deployed after arriving on site.

SPECIFICATIONS

EAGLE M25

TYPICAL DRIVE-BY PERFORMANCE

- **Steel Penetration:** 205 mm
- **Wire Resolution:** 2 mm

OPERATING FEATURES

- **X-ray Source:** 2.5 MeV
- **Crew:** Minimum of two operators (driver and analyst); ground guide and additional analysts optional
- **Scan Modes:** Drive-by with optional portal and CabScan modes
- **Scan Direction:** Bi-directional in drive-by mode
- **Scanning Speed:** 0.15, 0.25, 0.38 m/s in drive-by; up to 6 km/hr in portal mode
- **System Throughput:** Up to 80 trucks per hour in portal mode
- **Set-up Time:** 20 min in standard operating environment
- **Shore Power Requirements (option):**
 - **50 Hz:** 400 V, 63 A, 44 kVA
 - **60 Hz:** 220 V, 125 A, 48 kVA

SYSTEM DIMENSIONS AND SPECIFICATIONS

Chassis

- **Navistar:** Workstar chassis with crew cab

Stowed Dimensions

- **Length:** 9 m (29 ft 6 in)
- **Width:** 2.6 m (8 ft 6 in)
- **Height:** 4.0 m (13 ft 1 in)

Deployed Dimensions

- **Length:** 9 m (29 ft 6 in)
- **Width:** 7.3 m (23 ft 11 in)
- **Height:** 5.8 m (19 ft)

Maximum Scanned Object Dimensions

- **Width:** 2.8 m (9 ft 2 in)
- **Height:** 4.8 m (15 ft 9 in)
- **Minimum Scan Height:** 0.3 m (12 in) from ground

ENVIRONMENT

- **Operating Temperature:** -30° C to 50° C (-22° F to 122° F)
- **Maximum Wind Speed:** 40 km/h

HEALTH AND SAFETY

- **Open Radiation Exclusion Zone (in drive-by mode; 20 trucks per hour):** 18 m x 36 m (59 ft x 118 ft)
- **Radiation Dose at Exclusion Zone Boundary:** 0.5 μ Sv in any one hour
- **Radiation Dose to Driver (in portal mode):** < 0.25 μ Sv per scan
- **Radiation Dose to Crew:** 0.5 μ Sv in any one hour (20 scans/hr)
- **Radiation Dose to Cargo:** 1 μ Sv per scan

The performance characteristics and photos in this document are indicative and for information only and specifications may vary depending on scan speeds, options and other factors; the specific characteristics of individual systems may differ based upon customer requirements, operation, and supplied options. In addition, due to continual development of Rapiscan Systems and AS&E products, we reserve the right to amend specifications without notice. Please note that due to U.S. laws and regulations, not all products are available for sale in all countries without restriction. Please contact your Rapiscan | AS&E Cargo Scanning & Solutions sales representative for more information or to discuss additional requirements.

© 2018 Rapiscan Systems | American Science and Engineering, Inc.

Rapiscan | AS&E — Part of the OSI Systems family of security companies. We deliver products and services that help our customers find threats and contraband with ease and confidence, while maximizing operational efficiency. Our global service network enables us to respond to customer needs quickly and provide exceptional support, because we know that every moment of uptime is critical. We understand the importance of our customers' missions—from uncovering trade fraud, to combating terrorism, to detecting drug and weapons smuggling, to exposing illegal immigration. That's why it's our mission to help them succeed.

US Operations
829 Middlesex Turnpike
Billerica, MA 01821

UK Operations
Prospect Way
Victoria Business Park
Biddulph, Stoke-on-Trent ST8 7PL

Contact
Tel: +1.978.262.8700
Fax: +1.978.262.0533
rapiscansystems.com

SYSTEM OPTIONS

- **Portal Mode:** Supports the drive-through scanning of traffic. Requires the purchase of traffic control and monitoring devices
- **CabScan® Mode:** While in portal mode, safely scans the cab of the truck from front bumper to start of cargo
- **Integrated Peripheral Devices:** License/number plate recognition system, container code recognition system, and manifest scanner
- **Extreme Cold Weather Package:** Extends the system operating temperature to -40° C
- **Extreme Hot Weather Package:** Extends the system operating temperature to +55° C

Rapiscan
systems

AS&E