

# RAPISCAN 636SV

Deploy mobile baggage and parcel inspection at any location.

Self-contained Mobile Screening

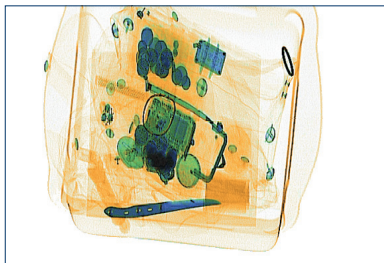
integrated Large Tunnel X-ray

Multi-Sided Operation

Rapid Deployment



Tunnel Opening (width x height):  
1,000 mm x 1,000 mm



The Rapiscan 636SV is a state of the art, self-contained mobile X-ray screening unit with a large tunnel opening. Utilising Rapiscan's proven 628XR X-ray solution for baggage and cargo inspection, the 636SV provides airport screening performance in a mobile platform. With an innovative design the ability to rapidly deploy baggage and parcel inspection at any location with one complete unit is possible. The Rapiscan MobileCheck 636SV can be deployed and operated from either side of the vehicle.

## Standard Features

- Mercedes Sprinter Vehicle (or Equivalent)
- Diesel Powered Water Cooled Engine
- Air Conditioned Drivers Cab and Operator Cabin
- On-Board Power Generator
- Multi Energy Imaging (4 Colour)
- View Previous/Next Bag
- Manual Image Archive
- Configurable Image Processing Keys
- Baggage Counter
- Search Indicator
- UPS (Uninterrupted Power Supply)
- Remote Workstation
- Flat Panel Monitor

## Standard Image Processing Functions

- Crystal Clear™
- Black and White
- Organic / Inorganic Stripping
- Inverse Video
- High Penetration
- Pseudo Color
- Low Penetration
- Variable Edge Enhancement
- Variable Color Stripping
- Variable Gamma
- Variable Density
- Dynamic Continuous Zoom & Panning
- Fixed Zoom (64x)

### Automatic Detection of Explosives

Target™ automatically detects a wide range of explosives in real time during the scanning process by visibly highlighting a potential threat on the X-ray image.

### Automatic Detection of Narcotics

NARCScan™ automatically detects a wide range of narcotics in real time during the scanning process by visibly highlighting a potential threat on the X-ray image.

### Greatest Number of Operator-Assist Tools Enables Highest Throughput

With over 13 image processing tools and multiple automatic detection functions,

operator easily and accurately detect contraband. Operator Assistance to enable the highest throughput and reduced operator fatigue.

### Operational Modes

The 636SV System can be deployed and operated from either side of the

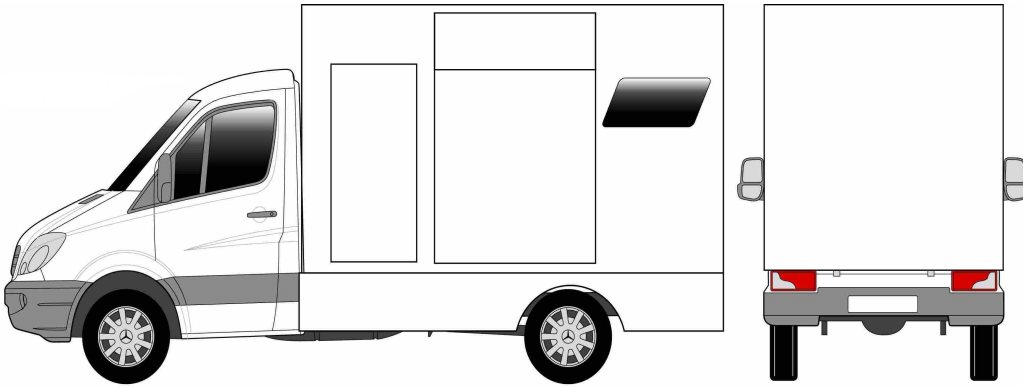
### Regulatory Compliance

Rapiscan 628XR image quality performance is in compliance with regulation (EC) No. 300/2008. In addition, Rapiscan 600 Series Threat



# RAPISCAN 636SV

## Physical Specifications



Dimensions Vehicle:	Length: 7,050mm including rear step Width: 2,270 mm Height: 3,050 mm
Tunnel Size:	1,000 mm (W) x 1,000 mm (H)
Conveyor Speed:	0.20 m/sec
Conveyor Load:	165 Kg evenly distributed
System Power:	On-board Diesel Generator / Shore Power Options

## X-Ray Generator and Image Performance\*

Steel Penetration:	28 mm guaranteed; 30 mm typical
Wire Resolution:	38 AWG guaranteed, 40 AWG typical
Material Separation:	Low Z, Medium Z, High Z to 0.5 Z accuracy
Generator Cooling:	Sealed oil bath with forced air
Anode Voltage:	Operating at 150kV
Tube Current:	1.8 mA
Orientation:	Vertically Downward

## Operating Environment

Operating Temperature:	-20°C to 50°C
Relative Humidity:	0°C to 40°C 5 to 95% non-condensing

## Health & Safety

Rapiscan Systems' cabinet X-ray products comply with all applicable US FDA and equivalent international regulatory agency requirements, contained in the cabinet X-ray radiation safety performance standard [21 CFR 1020.40] and the general performance standard [21 CFR Part 1010]. Rapiscan Systems certifies each cabinet X-ray product has a maximum radiation emission leakage of less 1  $\mu$ Sv/hr (0.1 mR/hr) from all external surfaces of the cabinet X-ray system.

With continual development of our products Rapiscan Systems reserves the right to amend specifications without notice. Product pictures are for general reference. Please note that due to US laws and regulations, not all Rapiscan products are available for sale in all countries without restriction. Please contact your Rapiscan Systems sales representative for more information.

## Options and Accessories

Left or Right Hand Drive Vehicle option

\*Target™ / Interactive Target™  
(Automatic detection of solid explosives)

Density Threshold Alert (DTA)

Threat Image Projection (TIP)

Automatic Image Archiving

Manual Scan

Operator Training Program (OTP)

Main Power Connection

Foot-mat

Optical Operator Presence Sensor

Input and Output Rollers

Intercom System

Power Conditioner

Printer Kit

## AMERICAS, CARIBBEAN

2805 Columbia Street  
Torrance, California 90503  
UNITED STATES OF AMERICA  
Tel: +1 310-978-1457  
Fax: +1 310-349-2491

## EUROPE, MIDDLE EAST, AFRICA

X-Ray House  
Bonehurst Road  
Salfords  
Surrey RH1 5GG  
UNITED KINGDOM  
Tel: +44 (0) 870-7774301  
Fax: +44 (0) 870-7774302

## ASIA

240 Macpherson Road  
#07-01 Pines Industrial Building  
Singapore 348574  
SINGAPORE  
Tel: +65-6846-3511  
Fax: +65-6743-9915

## EMAIL

sales@rapiscansystems.com

## WEB

www.rapiscansystems.com

**Rapiscan**<sup>®</sup>  
systems

An OSI Systems Company

ONE COMPANY - TOTAL SECURITY



Rapiscan Systems is  
ISO 9001:2008 Certified

www.rapiscansystems.com